

## GPS Module

The Life Racing **GPS** Module is a compact low mass unit capable of tracking vehicle speed by **GPS** position at **10Hz**. The unit features a built-in **3-axis** acceleration sensor for measuring Lateral, Longitudinal and Vertical g forces. The module connects to all Life Racing ECUs via the **CAN** network. Using LifeView PC software, track maps can be created and sessions analysed quickly and easily.



**Specification**      **10Hz GPS tracking with CAN 2.0B connection to Life Racing ECUs**  
 3 axis g  $\pm$  3g x, y, z

**Power Supply**      **6V to 28V DC**

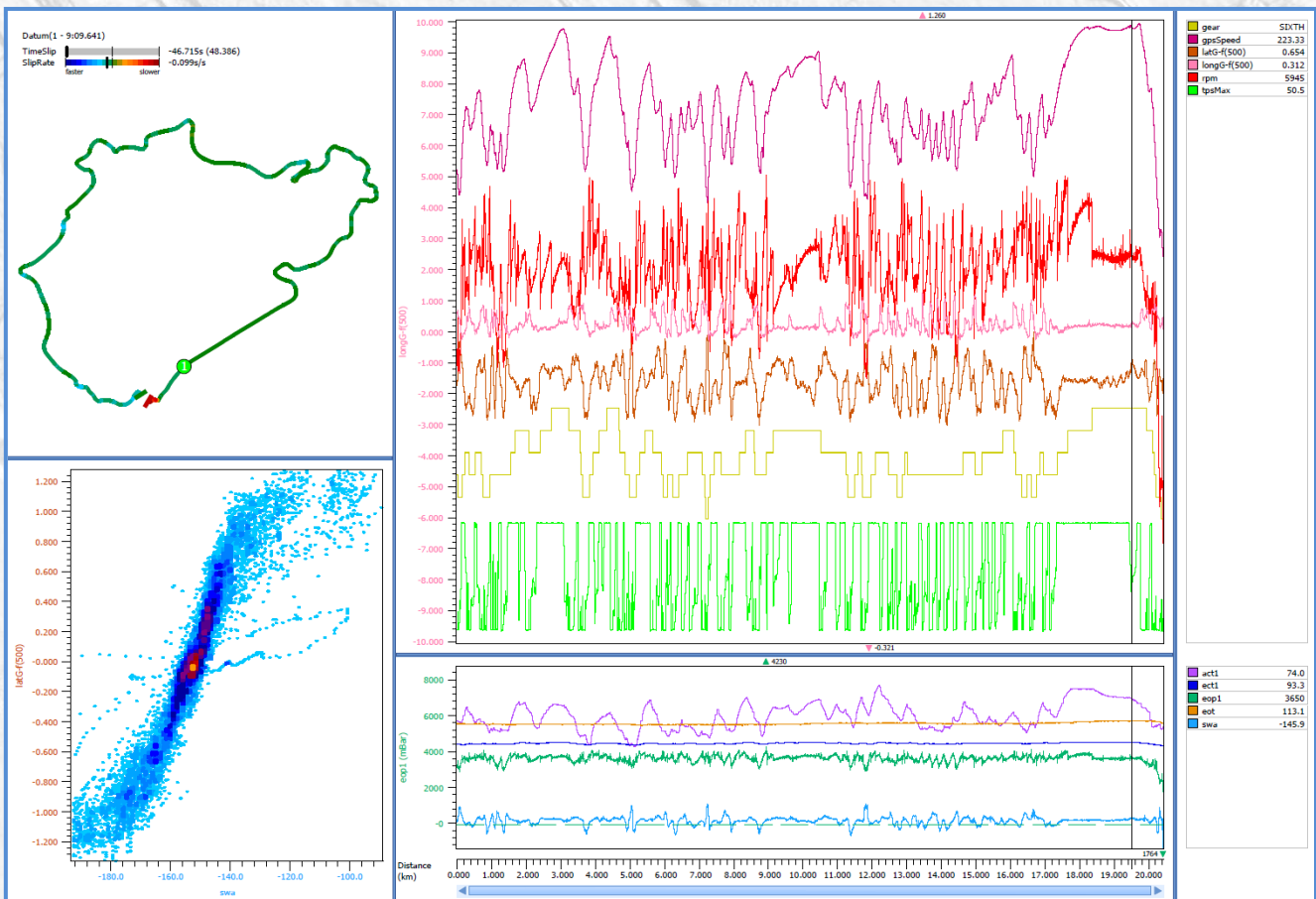
**Physical**              **Ruggedized plastic moulded water resistant case**  
**12 way Deutsch connector**  
**Maximum dimensions including the connectors are 140 x 120 x 36 mm**  
**Operating temperature -25 to +85°C**  
**Total mass ~245g**

**Pinouts**                **Mating Connector DTM06-12S**

- Pin1 = BATTERY SUPPLY
- Pin3 = CAN HI <sup>(1)</sup>
- Pin4 = CAN LO <sup>(1)</sup>
- Pin6 = POWER GROUND

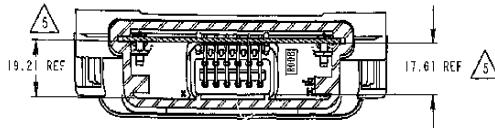
### FOOTNOTES:

<sup>(1)</sup> Connects to Life Racing ECU's CAN#01, no termination resistor fitted

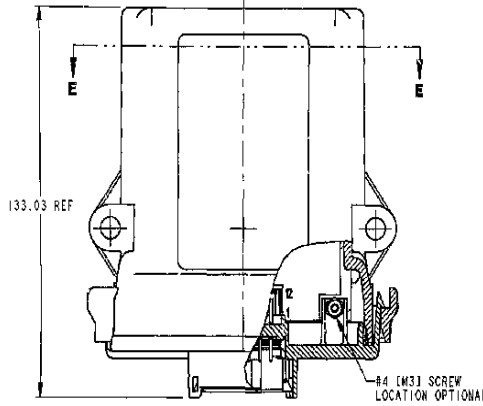


REV E		EEC-325X4A		EEC-325X4B		REVISIONS	
SYM	DESCRIPTION	DATE	APPROVED	SYM	DESCRIPTION	DATE	APPROVED
B	RELEASED PER E.O. P16628	5/2/00	C.W.				
C	RELEASED PER E.O. P17282	8-7-01	ADR				
D	RELEASED PER E.O. P17357	7-13-01	ADR				
E	RELEASED PER E.O. P18244	2/11/02	ADR				

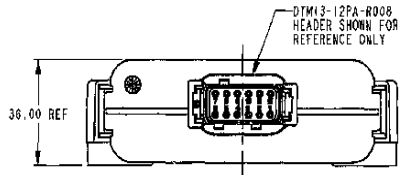
**ASSEMBLED HEADER SHOWN FOR REFERENCE**



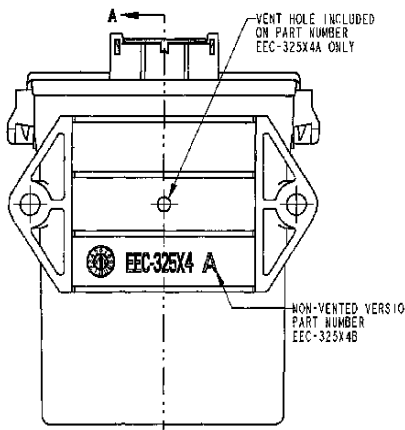
**SECTION E-E**



#4 (M3) SCREW LOCATION OPTIONAL



DTM13-12PA-R008 HEADER SHOWN FOR REFERENCE ONLY

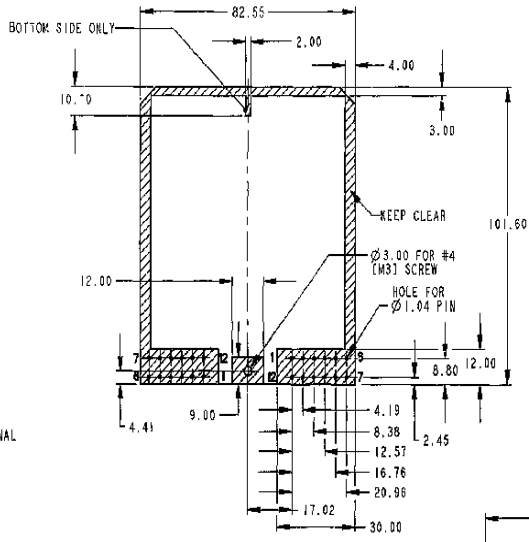


VENT HOLE INCLUDED ON PART NUMBER EEC-325X4A ONLY

NON-VENTED VERSION PART NUMBER EEC-325X4B

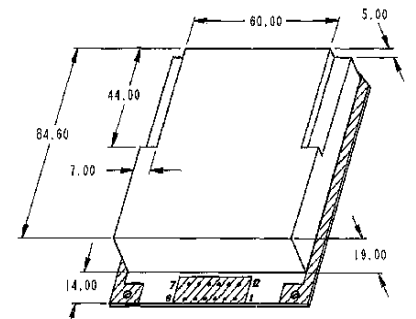
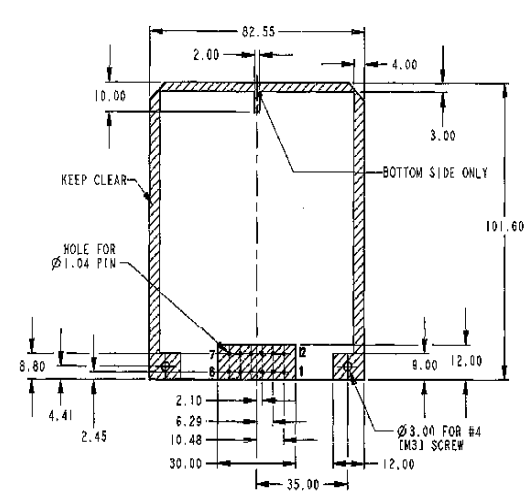
**CIRCUIT BOARD HOLE LOCATIONS AND KEEP CLEAR AREAS FOR**

DTM13-12P\*-12P\*-R008  
DTM13-12P\*-12P\*-GR01  
ALL DIMENSIONS REFERENCE TOP VIEW



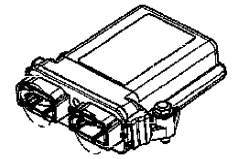
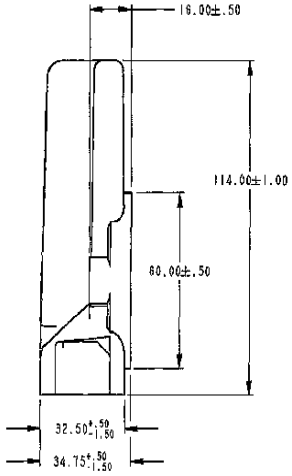
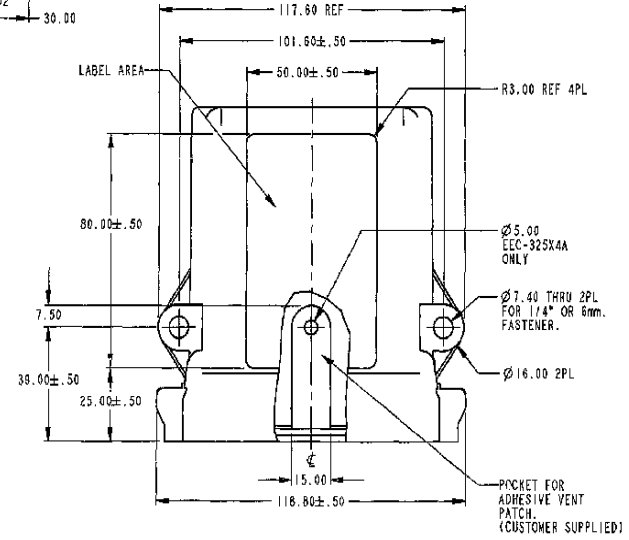
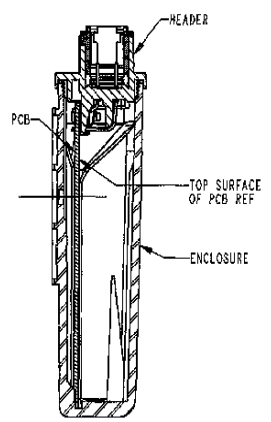
**CIRCUIT BOARD HOLE LOCATIONS AND KEEP CLEAR AREAS FOR**

DTM13-12P\*-R008  
DTM13-12P\*-GR01  
ALL DIMENSIONS REFERENCE TOP VIEW

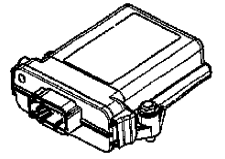


**THREE DIMENSIONAL SPACE LIMIT**  
APPROXIMATE INTERNAL SPACE FOR COMPONENT SPACE LAYOUT  
MAX. COMPONENT HEIGHT UNDER BOARD 3.00 mm.

**SECTION A-A**



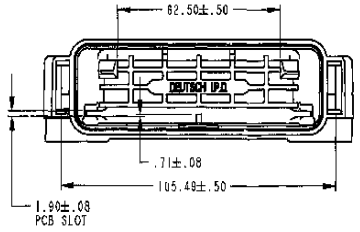
**3D VIEW**  
DTM13-12P\*-12P\*-R008 AND DTM13-12P\*-12P\*-GR01 HEADER AND MOUNTING HARDWARE SHOWN FOR REFERENCE



**3D VIEW**  
DTM13-12P\*-R008 AND DTM13-12P\*-GR01 HEADER AND MOUNTING HARDWARE SHOWN FOR REFERENCE

- △ MAXIMUM COMPONENT HEIGHT DEPENDS ON LOCATION DUE TO PART DRAFT AND RIBS.
- THIS ENCLOSURE MATES WITH DTM13-12P\*-R008 (NI PINS); DTM13-12P\*-GR01 (AU PINS); DTM13-12P\*-12P\*-R008 (NI PINS); DTM13-12P\*-12P\*-GR01 (AU PINS) HEADERS. (\* = A,B,C,D KEYS).
  - ENCLOSURE MATERIAL: NYLON 6/6 BLACK.
  - ALL DIMENSIONS ARE +/- .25 UNLESS OTHERWISE SPECIFIED.

NOTES: 1. ALL DIMENSIONS ARE METRIC.



SIGNATURE & DATE	
DR	C. WOODRUFF 25APR00
CHK	
PE	
APPD	
SCALE	NONE WT

PCB ENCLOSURE SHOWN WITH 12 AND 24 PIN HEADER VENTED AND NON-VENTED DTM SERIES

EP 053

**The Deutsch Company**  
DENTON I.P.D.  
3850 INDUSTRIAL AVE.  
HEMET, CALIF. 92345

**EEC-325X4A**  
**EEC-325X4B**

ENVELOPE

DATE: 1/23/02

SHEET 1 OF 1